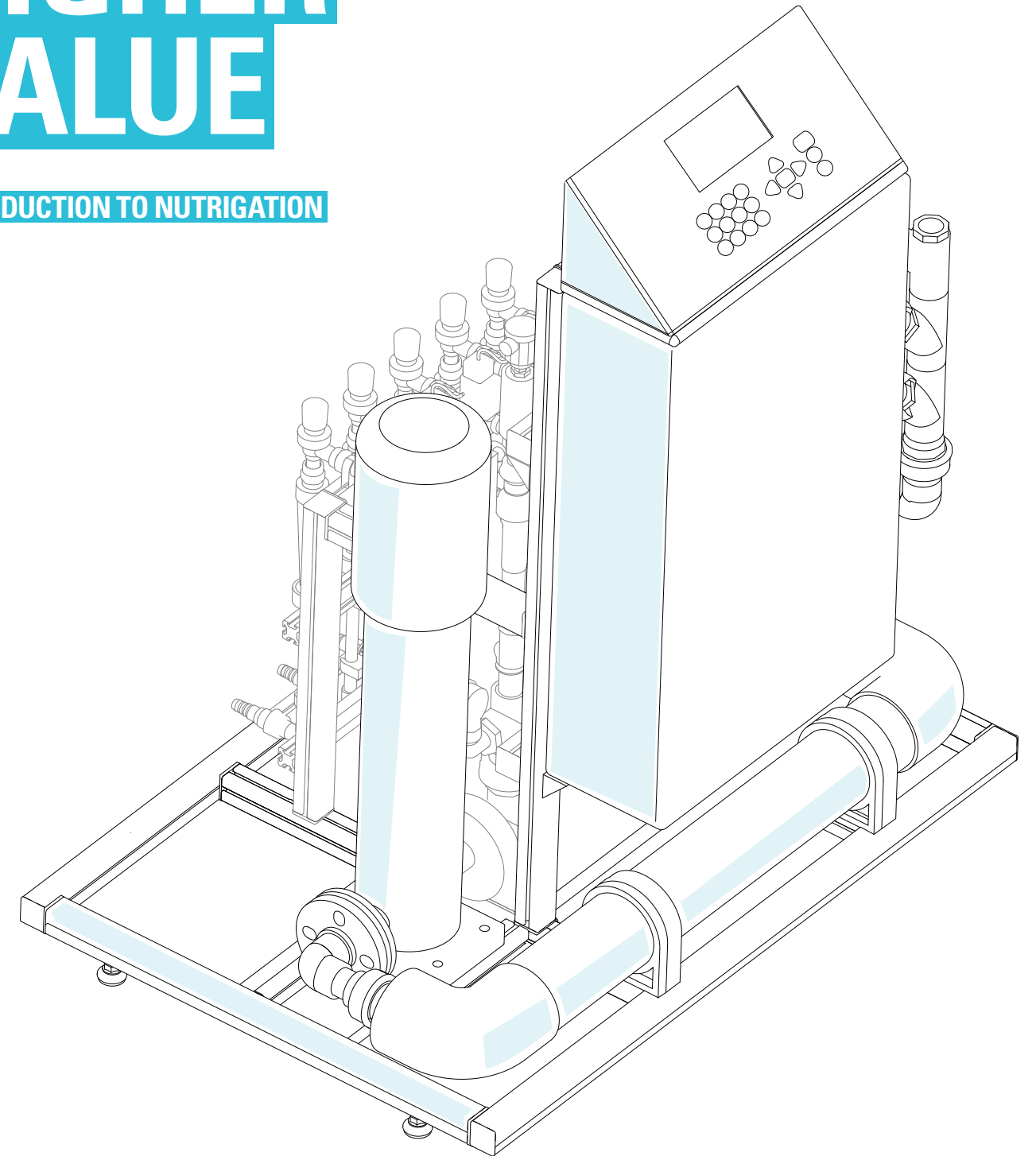


MORE CONTROL HIGHER VALUE

INTRODUCTION TO NUTRIGATION



CROP MANAGEMENT TECHNOLOGIES

info@netafim.com

GROW MORE WITH LESS

WWW.NETAFIM.COM

 **NETAFIM™**

GROW MORE WITH LESS

AS THE WORLD'S POPULATION CONTINUES TO RISE AND NATURAL RESOURCES COME UNDER PRESSURE, MORE EFFICIENCY MAKES MORE SENSE THAN EVER. AT NETAFIM WE HELP OUR CUSTOMERS PRODUCE MORE YIELDS AND BETTER CROPS WITH LESS RESOURCES. NETAFIM IS THE GLOBAL LEADER IN SMART WATER SOLUTIONS FOR AGRICULTURE. WE HELP THE WORLD GROW MORE WITH LESS.

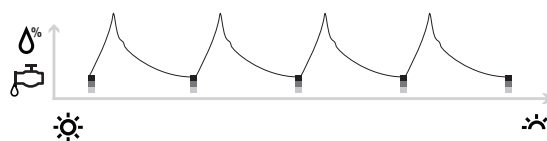
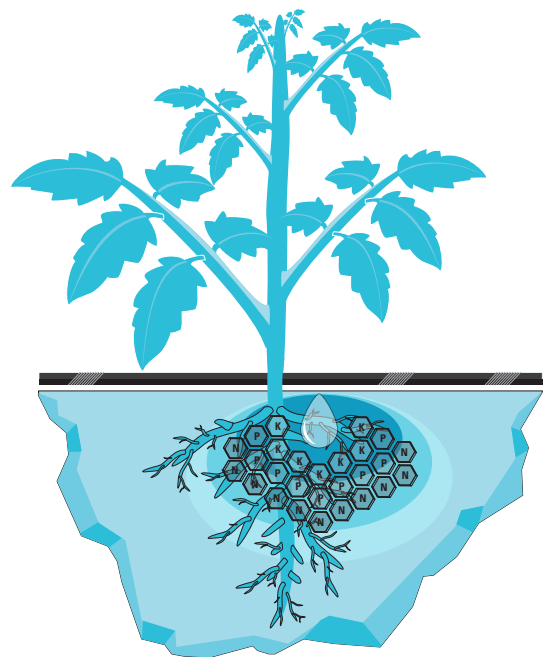
NUTRIGATION™

MODERN AGRICULTURAL CHALLENGES, PRECISE AND UNIFORM NUTRIGATION SOLUTIONS.

NUTRIGATION™ SOLUTIONS FOR IRRIGATION CHALLENGES

All over the world farmers are increasingly faced with modern agricultural challenges and the need of finding creative solutions to deal with:

- Growing water shortages
- Working in more environmentally friendly ways
- Efficient usage of water, fertilizers and energy



OUR NUTRIGATION™ CONCEPT

Netafim's Nutrigation™ Systems offer farmers the ability to have precise control of nutrient delivery and irrigation timing according to the changing needs of the plant.

DELIVERING PROVEN RESULTS

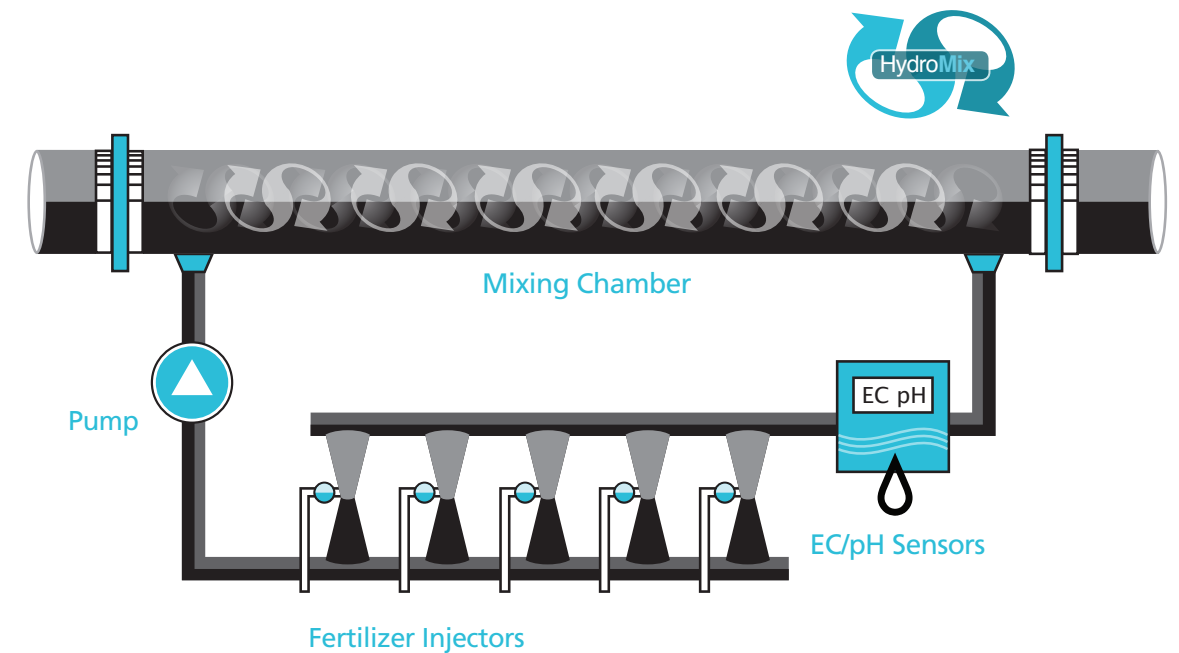
- Significant improvement in crop quality and yield
- Reduction of fertilizer and energy consumption
- Reduction of expenses
- Cost-effective solutions
- Rapid Return On Investment

ADDITIONAL BENEFITS

- User Friendly Fertigation Controllers
- EC & pH Measurement and Control
- System Reliability and Longevity
- After Sales Service
- One Year Guarantee

INNOVATIVE HYDROMIX TECHNOLOGY

DELIVERING COMPACT, PRECISE AND UNIFORM NUTRIGATION™ SOLUTIONS



A COST EFFECTIVE WAY TO ENHANCE CROP QUALITY AND YIELD

Netafim's Nutrigation™ system converts precise pulse fertigation into a uniform Nutrigation™ mix that enables fast and accurate fertilizer injection and reduces energy consumption. The relatively compact NetaJet utilizes a small mixing chamber that is designed to ensure remarkably precise fertigation. With its unique, homogeneous solution of HydroMix technology, NetaJet uses up to 5 dosing channels that are based on an accurate and efficient Venturi injector that gets the job done with no moving parts. This includes quick action dosing valves, a visual flow meter and low pressure protection. By ingenious leverage of in-house HydroMix technology, Netafim™ offers a Nutrigation™ solution that is compact and precise while enabling cost-effective ways to enhance crop quality and yield.



NETAJET FAMILY DELIVERING ORIGINAL AND UNIQUE ANSWERS TO MODERN AGRICULTURAL CHALLENGES

KEY BENEFITS

- OPTIMIZE RESOURCE UTILIZATION FOR EACH SPECIFIC LAND TYPE AND CROP
- BASED ON NETAJET'S UNIQUE NUTRIGATION TECHNOLOGY, IT SAVES ENERGY, FERTILIZER AND WATER WHILE INCREASING YIELD QUALITY AND QUANTITY
- EXTREMELY ACCURATE AND RELIABLE DOSING SYSTEM, PREVENTING WATER AND FERTILIZER WASTE WHILE REDUCING ENVIRONMENTAL POLLUTION
- MODULAR SYSTEM CONFIGURED TO SPECIFIC CLIENT REQUIREMENTS
- PROVIDING LOWER COST OF OWNERSHIP AND A VERY FAST RETURN ON INVESTMENT AS PART OF NETAJET'S COMPREHENSIVE SOLUTION

NETAJET PL FAMILY

- Provides fast and accurate fertilizer and acid control
- Converts precise pulse fertigation into a uniform solution
- Compatible with Netafim's NMC controller and a wide range of irrigation controllers
- Main line flow rate:
 - NetaJet Inline: 0.5 to 20m³/hr (5 to 90 Gal/min)
 - NetaJet Bypass: 20 to 120m³/hr (90 to 500 Gal/min)
 - NetaJet High Flow: 80 to 400m³/hr (300 to 1,700 Gal/min)
- Dosing channel and flow rate:
 - NetaJet Inline: 3 to 5 channels of 300 lit/hr (80 Gal/hr)
 - NetaJet Bypass: 3 to 5 channels of 300 lit/hr (80 Gal/hr)
 - NetaJet High Flow: 3 to 5 channels of 1,000 lit/hr (260 Gal/hr)
 - Optional: Up to 3x40l/hr (10 Gal/hr), for 98% Acid concentration
- Operating pressure: 3-8.5 Bar (43-123 PSI)



NETAJET ST FAMILY

- State OfThe Art solution for storage water tank applications
- Delivers accurate control of fertilizers and acid in various flow rate of up to 150 m³/hr
- Works without an auxiliary pump – saving installation time, energy and costs
- Compatible with Netafim's NMC controller and a wide range of irrigation controllers
- Main line flow rate:
 - NetaJet Inline: 0.5 to 20m³/hr (5 to 90 Gal/min)
 - NetaJet Bypass: 15 to 150m³/hr (70 to 700 Gal/min)
- Dosing channel and flow rate:
 - NetaJet Inline: 3 to 5 channels of 300 lit/hr (80 Gal/hr)
 - NetaJet Bypass: 3 to 5 channels of 300 lit/hr (80 Gal/hr)
 - Optional: Up to 3x40l/hr (10 Gal/hr), for 98% Acid concentration
- Operating pressure: Depends on the client's requirement

