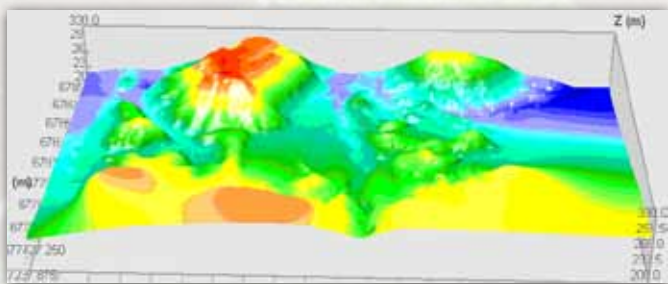


IRRICAD PRO® 15.0 IS NOW AVAILABLE FOR PRE-PURCHASE

IRRICAD PRO® 15.0

IRRICAD'S LATEST UPGRADE IS NOW
AVAILABLE FOR PRE-PURCHASE



IRRICAD PRO® 15.0 is a stand alone, graphically based, computer aided design package developed specifically for designing pressurised irrigation or water supply systems. IRRICAD is far more than a drawing package because it combines the advantages of CAD drawing with powerful hydraulic pipe sizing and network analysis techniques.

IRRICAD PRO® 15.0 latest updates include

- **SCREEN SELECTION FOR BOM/COSTING REPORTS**
- **VALVE-IN-HEAD BLOCK TOOL**
- **RUNNING COSTS AND ANNUALISED REPORTING**
- **NEW MISCELLANEOUS COSTS TOOL**
- **EVEN FLOW VALVE PLACEMENT FOR IRRIGATION BLOCKS**

NETAFIM AUSTRALIA

213 - 217 Fitzgerald Road
Laverton, VIC 3026
Australia

Tel: 03 8331 6500
Fax: 03 9369 3865
Email: au.net.info@netafim.com
Web: netafim.com.au



WHAT'S NEW IN IRRICAD PRO® 15.0

WE'VE WORKED HARD TO BRING YOU A RANGE OF NEW FEATURES AND USER EXPERIENCE IMPROVEMENTS IN IRRICAD PRO® 15.0

SCREEN SELECTION BASED REPORTING

Select a portion of the design and the Bill of Materials or Costing reports will only include the selected items and their costs.

VALVE-IN-HEAD BLOCK TOOL

NEED TO SET UP A BLOCK OF VALVE-IN-HEAD SPRINKLERS?

Version 15.0 introduces the sprayline block tool for mainline outlets. Each mainline sprinkler is automatically assigned a zone name for easy operational management.

REPORTING ON TOTAL COSTS OF EACH DESIGN

HOW MUCH DOES IT COST TO RUN THE SYSTEM OVER TIME?

Now IRRICAD will report the annual running cost and also the annualised total costs. The capital and power costs, interest rate, and period of time are defined by you. Use this feature to compare the total cost between different design options or show the client the total cost of the system.

Include the running costs of the water supply without adding a pump on to the design. You can view the annual running costs in the economic reporting, available in selected Bill of Materials and Costing reports.

ADD MISCELLANEOUS ITEMS TO DESIGN COSTING

Additional items now can be seamlessly added to your plan for Bill of Materials and Costing reports via the new "Miscellaneous Costs" tool.

EVEN FLOW RATE VALVE PLACEMENT

REQUIRE A VALVE TO BE CENTRALLY PLACED BASED ON WATER FLOW IN AN IRREGULAR BLOCK?

With the new placement option in the Irrigation Block tools you can automatically place a valve to have the same amount of flow on either side.

ADDITIONAL FEATURES IN IRRICAD PRO® 15.0

- Headlands and sidelands options added to block tools
- Create multiple pressure or flow maps in one action
- Pipe Reductions at outlets
- New toolbar icons – a Zone Design Configuration icon and a Show Flow icon have been included
- New Report toolbar for one-click reporting
- Object Info dialogue box retains user-defined size between IRRICAD sessions
- Duplicate Symbol tool
- Many other minor improvements and fixes.

Additionally, we plan to include a report on Travel Time for fertigation late 2016.

MORE INFORMATION

You can read more about IRRICAD PRO® 15.0 changes and new features in the Recent Developments and Latest Enhancements on www.rricad.com.au

UPGRADE PRICING

When you purchase IRRICAD PRO® 15.0 you will continue to receive priority support and patch releases for 12 months.

ORDER INFORMATION

To order a full version or upgrade to the new IRRICAD PRO® 15.0 please contact the following.

GENNARO VELLOTTI

Email: gennaro.vellotti@netafim.com
Mobile: 0419 362 845

MATTHEW FORWARD

Email matthew.forward@netafim.com
Mobile: 0407 501 527

IRRICAD SOFTWARE	COST
IRRICAD PRO® 15.0	\$5,396.00
1 Version upgrade (v14.0 to v15.0)	\$695.00
2 Version upgrade (v13.0 to v15.0)	\$1,346.00
3 Version Upgrade (v10, 10.5, 11.0, 11.5 & 12.0 to v15.0)	\$1,796.00
4+ Version Upgrade (v9.5 or older to 15.0)	\$2,395.00
Rent IRRICAD PRO® 15.0 (Current version initial 12 months)	\$1,745.00
Rent IRRICAD PRO® 15.0 (Current version 12 months)	\$1,495.00

Prices shown are exclusive of GST

NETAFIM AUSTRALIA

213 - 217 Fitzgerald Road
Laverton, VIC 3026
Australia

Tel: 03 8331 6500
Fax: 03 9369 3865
Email: au.net.info@netafim.com
Web: netafim.com.au

